

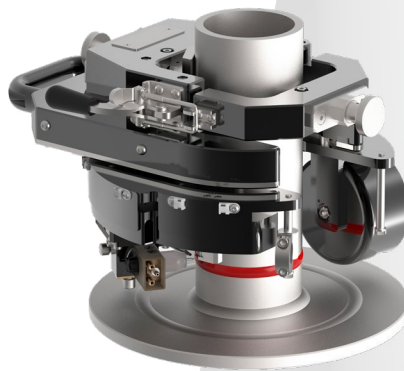
# **M-401/M-601**

## VERSATILE GROOVE & FILLET WELD HEAD

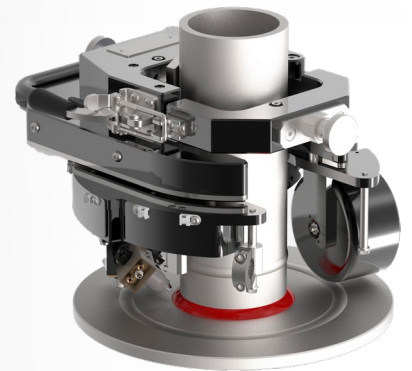
-  Direct On Pipe Clamping, No Tracks Required
-  Rigid, Self Aligning Clamp
-  Repeatabe, Quick Pipe Size Adjustment
-  Conversion From Fillet To Groove In Seconds
-  Configurable AVC and Oscillation Directions
-  Commercially Available Consumables



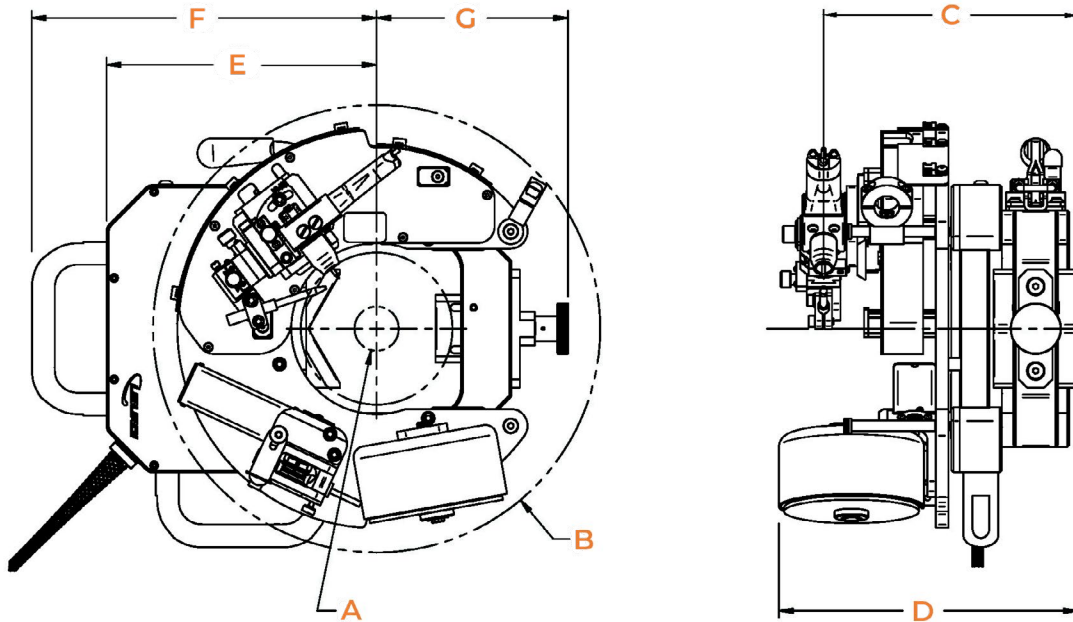
Tube Sheet



Groove



Fillet



■ Specifications:

	M-401	M-601
Pipe OD (A)	1.3"- 4.5" [33mm-114mm]	2.9"- 6.6" [73mm-168mm]
Rotary Envelope (B)	Ø13.3" [Ø337mm]	Ø15.5" [Ø394mm]
Nominal Torch Position (C)	7.5" [191mm]	7.5" [191mm]
Axial Clearance (D)	8.9" [225mm]	8.9" [225mm]
Clearance to Housing (E)	8.0" [203mm]	9.2" [233mm]
Clearance to Handle (F)	10.2" [259mm]	11.3" [287mm]
Clearance to Clamp (G)	5.7" [144mm]	7.2" [182mm]
Maximum Rotation Speed	1.1 rpm	.8 rpm
Weight Without Cables	29 lbs [13kg]	42 lbs [19kg]
Weight With Cables	62 lbs [28kg]	75 lbs [34kg]

- Wire feed speed up to 100 IPM [2.54m/min]
- Wire diameter range: 0.030" to 0.045" [0.8mm to 1.1mm]
- On-board wire feeder and standard 4" (2lbs) spool
- Motorized Axial travel: 0.75" [19mm]; position control
- Motorized Radial travel: 1.00" [25mm]; position control
- Water cooled torch, 200 A 100% Duty Cycle
- Manual torch Lead/Lag adjustment: +/- 15°
- Manual torch tilt In/Out adjustment: - 30°/+120°
- Manual Up/Down, Left/Right wire manipulator
- Cable length: 35ft [10.7m]



Compatible Power Supplies:  
Liburdi Dimetrics Gold Track™ and  
P300™

