

FIRECAM™

WELD MONITORING CAMERA

Designed to work with FireView based Liburdi welding products, or as a standalone system



Configurable resolution (up to 1080p)



Ultra compact form factor



Built in LEDs



Full colour HDR Video



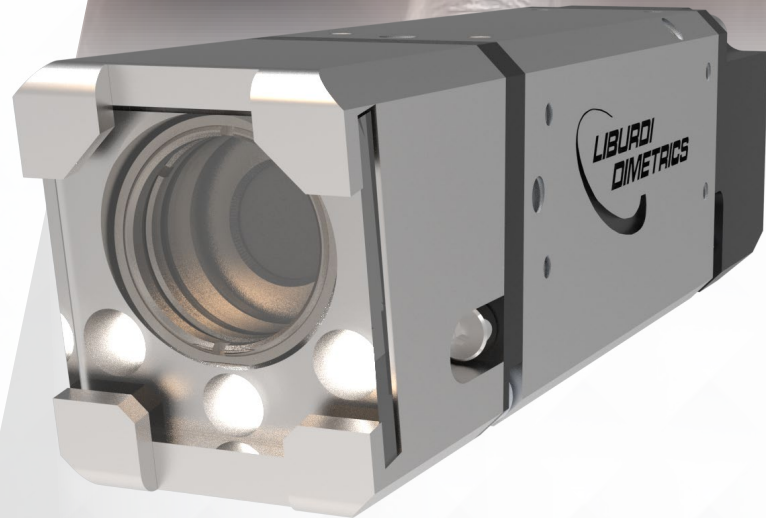
Integrated watercooling



Replaceable protective window



Straight, 90° and periscope models available



FIRECAM TO SCALE (AMERICAN QUARTER)

System Capabilities

Features	Description	FireView	FireView SA	HDMI
Image Adjustment	Weld shades provide adjustable image brightness	.	.	
	Pre-weld (setup) image adjusted for optimal brightness	.	.	
	Digital pan	.	.	
	Digital zoom 0.67x – 1.25x	.	.	.*
	Digital image mirroring	.	.	
Video Recording	Manual start and stop	.	.	
	Automatic recording start at pre-purge and stop after post-purge	.		
Monitoring	Digital temperature readout and over-temperature alarm	.	.	
Other Features	On / off LED control, dimming	.	.	**
	Arc pulse shutter sync mode	.		
	Crosshair overlays and sizing capabilities	.		
	Weld parameter overlay	.		

* Factory pre-set, can be adjusted by Liburdi Technicians

** LEDs remain at pre-set brightness on as long as the unit is powered

*** 0.67x – 1.25x Digital Zoom Available. Based on default 1280x720 resolution

Viewing Distance and Field of View

Focal length	Horizontal FOV (degrees)	Minimum		Nominal		Maximum	
		D	W x H***	D	W x H***	D	W x H***
10mm	22	2.5" [63mm]	1.4" x 0.8" [34x19mm]	3.6" [91mm]	1.8" x 1" [46x25mm]	5.5" [140mm]	2.5" x 1.4" [64x36mm]
17.5mm	12.5	3" [76mm]	0.9" x 0.5" [23x13mm]	6.9" [175mm]	1.8" x 1" [46x25mm]	10" [254mm]	2.5" x 1.4" [64x36mm]

Specifications

- Camera dimensions: 3.8" [98mm] x 0.8" [20mm] x 1" [25mm]
- Controller dimensions: 5.2" [131mm] x 3.4" [87mm] x 1.2" [31mm]
- Cable Lengths:
Camera to Controller: 40' [12m] standard (up to 50' [15m] optional)
Controller to Display (Cat6a): 3' [1m] standard (up to 330' [100m] optional)

Standard Features

- Non water cooled up to 50°C
- Built in LEDs
- Flexible coaxial cable
- Multiple lens options available
- 17mm form factor available (i.e ELMO standard)
- Compatible with FireView, FireView SA, and standalone HDMI output

