

K HEAD

DURABLE AND FIELD PROVEN

This multi-process head is designed with productivity in mind. Quick process change over and travel release clutch make the K Head a versatile tool.



Designed for a wide range of pipe sizes



Compact low profile design for applications with tight clearances



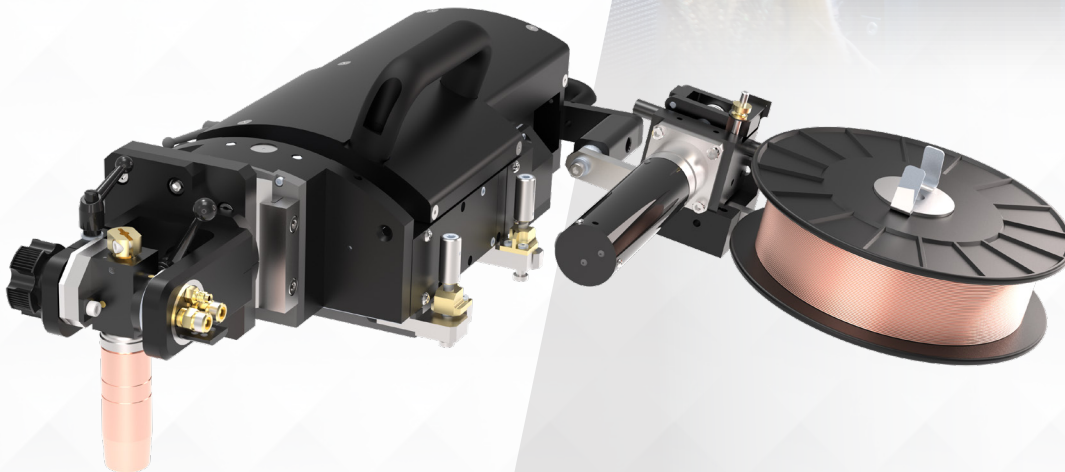
Field proven durable design

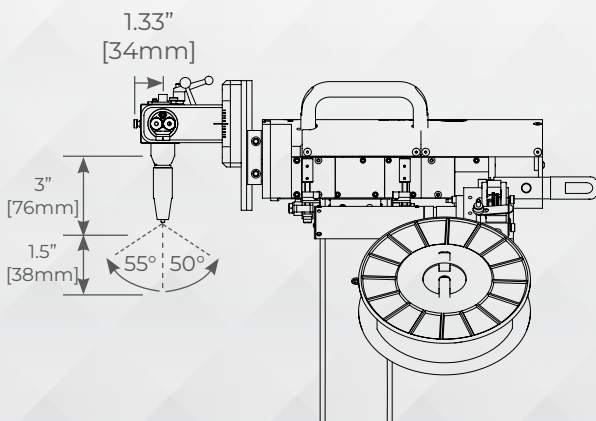
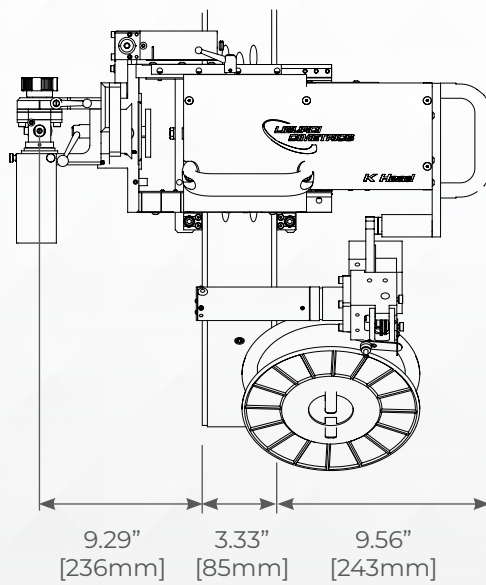
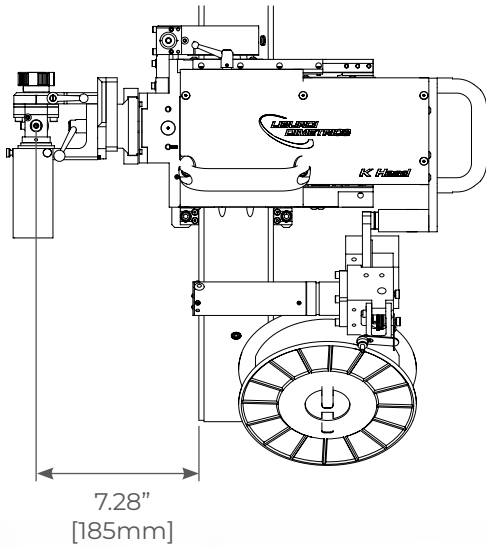


GMAW & GTAW



Commercially available consumables





Specifications

- Maximum programmable travel speed: 36 IPM [91 cm/min]
- Wire speed programmable to 600 ipm [1,524 cm/min]
- Oscillation stroke is programmable up to 2" [50 mm]
- Minimum axial clearance 17.6" [447 mm]
- Minimum radial clearance 6.50" [165 mm]
- Torch theta adjustment range +55° - 50°
- Torch lead-lag adjustment $\pm 45^\circ$
- Cable harness length 35ft [10.7 m] (Extensions are available)
- Weight approximately 20 lbs [9 kg]

Standard Features

- Water cooled torch
- High speed torch oscillation with programmable dwell
- Manual clutch release for rapid positioning and cable wrap
- Manual locking mechanism for torch tilt and lead-lag adjustment
- Compact size for demanding space requirements
- Minimum 6.50" [165 mm] radial clearance
- On board wire spool holder with 800 ipm [2,032 cm/min]
- Servo driven wire feeder holds 10-15 lb [4.5 - 6.8 kg] spool
- Clamping mechanism allows quick set up on hardened split tracks

Options

- Programmable proximity height control (AHC)
- Skate adapter for ID welding use
- Weld head extension cables in 50 ft (15 m) or 100 ft (30m) increments
- Motorized Theta Front End
- TIG Adaptor Kit
- Longer AVC dovetails for deeper welds

